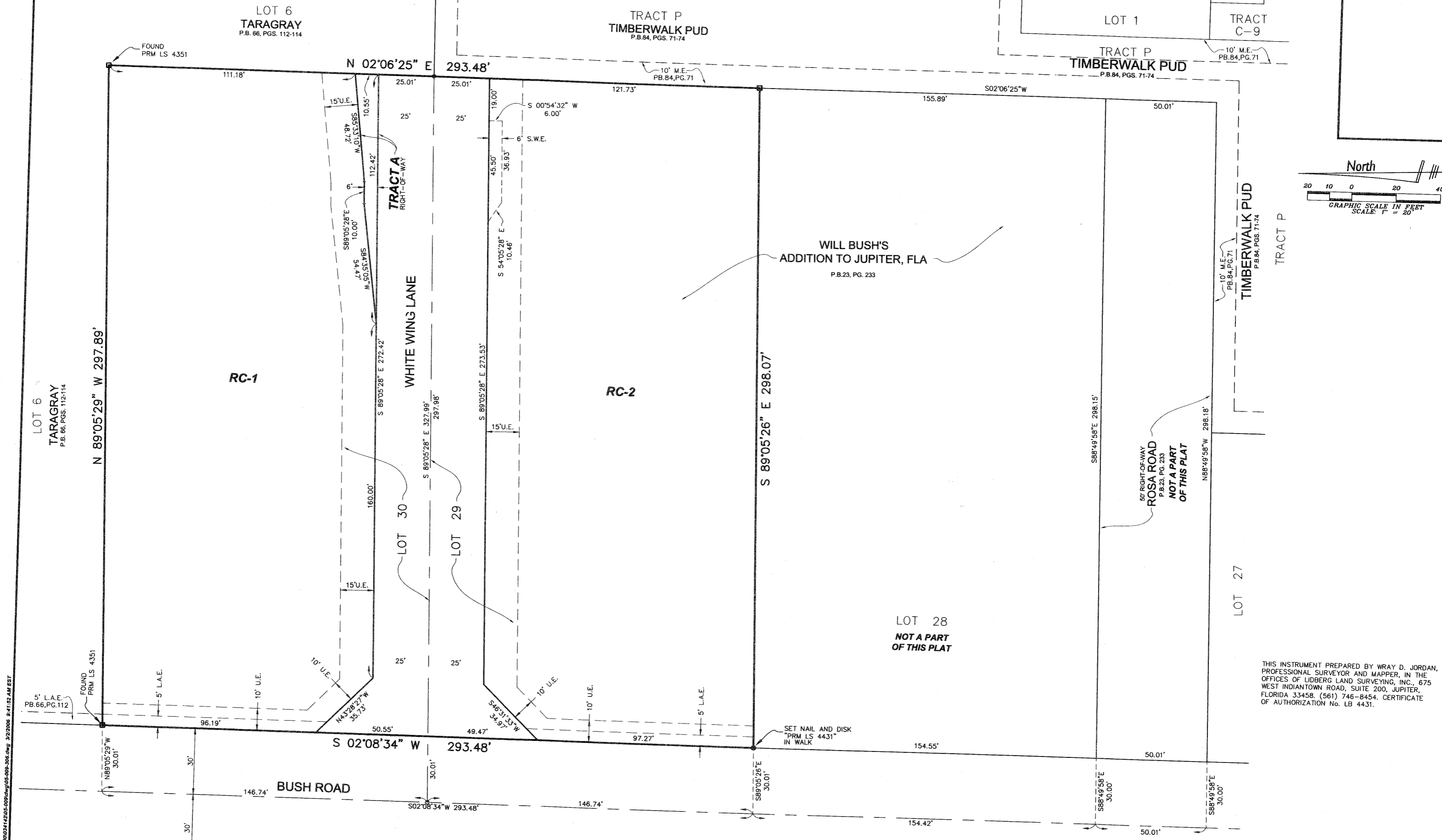


WHITE WING

BEING A REPLAT OF A LOTS 29 AND 30, WILL BUSH'S ADDITION TO JUPITER, FLORIDA, AS RECORDED IN PLAT BOOK 23, PAGE 233, PUBLIC RECORDS OF PALM BEACH COUNTY, FLORIDA, LYING IN SECTION 3, TOWNSHIP 41 SOUTH, RANGE 42 EAST, TOWN OF JUPITER, PALM BEACH COUNTY, FLORIDA MARCH, 2006 SHEET 2 OF 2

122



THIS INSTRUMENT PREPARED BY WRAY D. JORDAN, PROFESSIONAL SURVEYOR AND MAPPER, IN THE OFFICES OF LIBBERG LAND SURVEYING, INC., 675 WEST INDIANTOWN ROAD, SUITE 200, JUPITER, FLORIDA 33458. (561) 746-8454. CERTIFICATE OF AUTHORIZATION No. LB 4431.

LIBBERG LAND SURVEYING, INC.
 675 West IndianTown Road, Suite 200, Jupiter, Florida 33458 TEL. 561-746-8454
 LB 4431

CAD	K:\AUTOCAD 2000\34142\05-009\DWG\05-009-306.DWG		
REF	K:\AUTOCAD 2000\34142\05-009\DWG\05-009-100.DWG		
FLD	K.C.	FB.	FC.
OFF	W.D.J.		JOB 05-009-306
CKD	W.D.J.	SHEET 2 OF 2	DATE 08/29/05
			DWG D05-009P

K:\AUTOCAD\2000\34142\05-009\DWG\05-009-306.DWG 3/22/06 9:41:52 AM EST